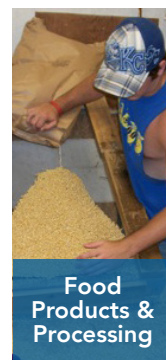
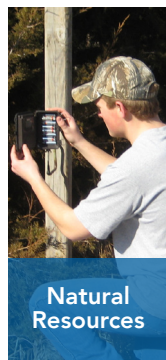
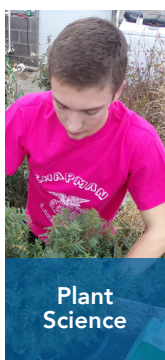
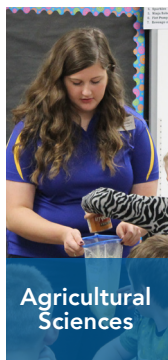


Agricultural education prepares students for successful careers and a lifetime of informed choices in the global agriculture, food, fiber, and natural resources systems. Students accomplish this through contextual, inquiry-based instruction and learning through an interactive classroom and laboratory, developing premier leadership, personal growth and career success through engagement in FFA activities and programs, and participating in experiential, service and/or work-based learning through the implementation of a supervised agricultural experience program.

STUDENTS CAN CHOOSE CLASSES IN THE FOLLOWING PATHWAYS



Agricultural education programs will respond to community needs and Kansas' agriculture needs. It will prepare students to be College and Career Ready and to participate as leaders and managers in a global economy.

NEW PROGRAMS IN 2020-2021

- Attica »
- Canton-Galva »
- Dexter »
- Lansing »
- Larned »
- Lyons ◇
- Madison »

- Norwich »
- Olathe Advanced Technical Center ◇
- Olathe West ◇
- Osborne County ◇
- Pratt ◇
- Sterling »

- Topeka Center for Advanced Learning and Careers (TCALC) ◇
- Wheatland ◇

» = 2019-20 Program
◇ = 2020-21 Program

OUR VISION

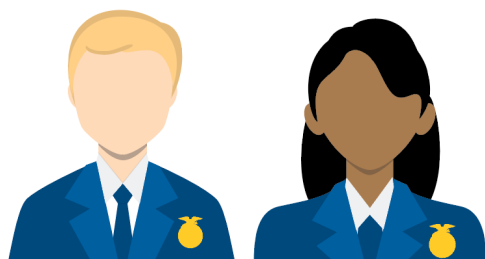
Grow Leaders



Build Communities



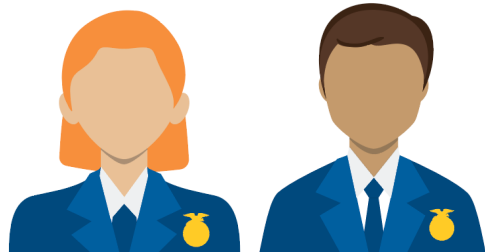
Strengthen Agriculture



9,722 members in **220** chapters
developing their potential for

**PREMIER LEADERSHIP
PERSONAL GROWTH
and CAREER SUCCESS**

through agricultural education.



42% Female

56% Male

*2% Undisclosed

According to the Ag Experience Tracker,
agricultural education programs are likely to
develop

\$50,827

in total economic impact to their local
communities through student's Supervised
Agricultural Experience (SAE) programs.

Kansas FFA members recieved



over \$201,000
in scholarships
from the Kansas
and National
FFA Foundations
for education
and conferences.

25 Career and Leadership

Development
Events provide
opportunities
for members to
compete, and
further their
career success.



www.ksffa.org